

**ISCC PLUS**

## **Certification Guideline**

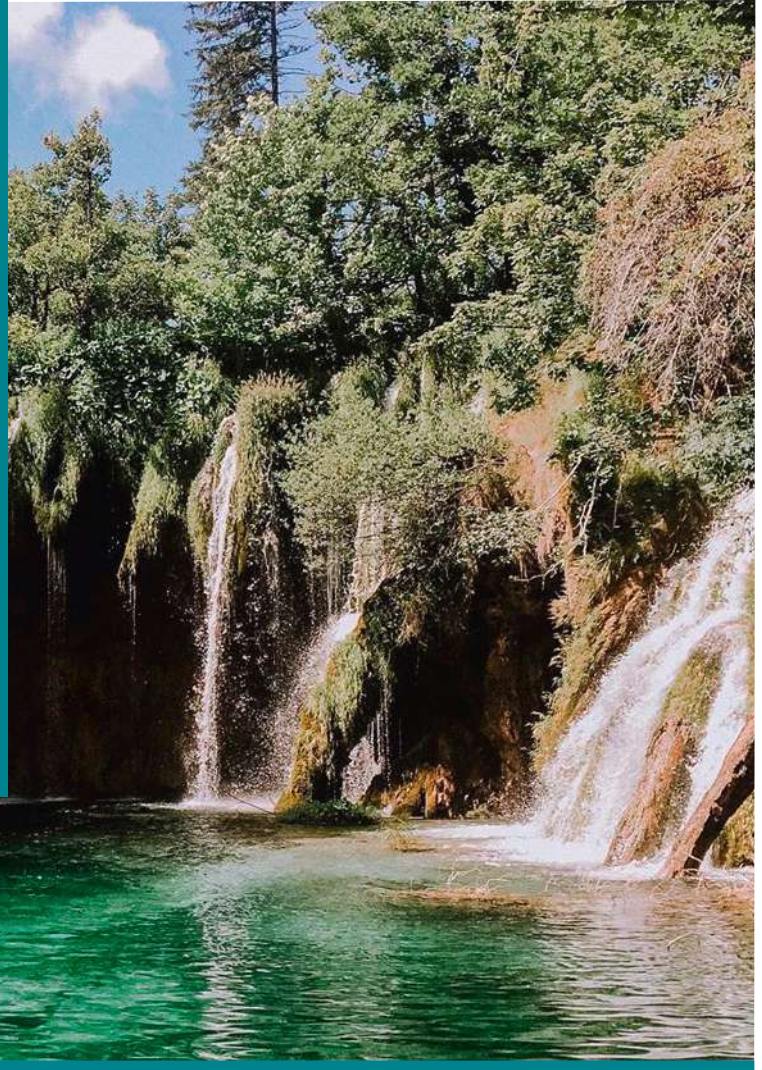
This guideline will answer many of the frequently asked questions regarding the ISCC PLUS standard.

For further information please visit [www.iscc-system.org](http://www.iscc-system.org) or contact the ISCC helpdesk via [info@iscc-system.org](mailto:info@iscc-system.org)

# Positive Impact

ISCC's goals are to provide certification solutions for fully traceable and environmentally, socially and economically sustainable supply chains.

With that ISCC supports companies by fulfilling the *United Nations 2030 Agenda for Sustainable Development*.



Well-defined and third-party verified claims



Transparent rules for mass balancing and physical segregation



Protection of biodiversity and high carbon stock areas



Feedstock identity

## ISCC Key Pillars



No deforestation



Traceability throughout the supply chain

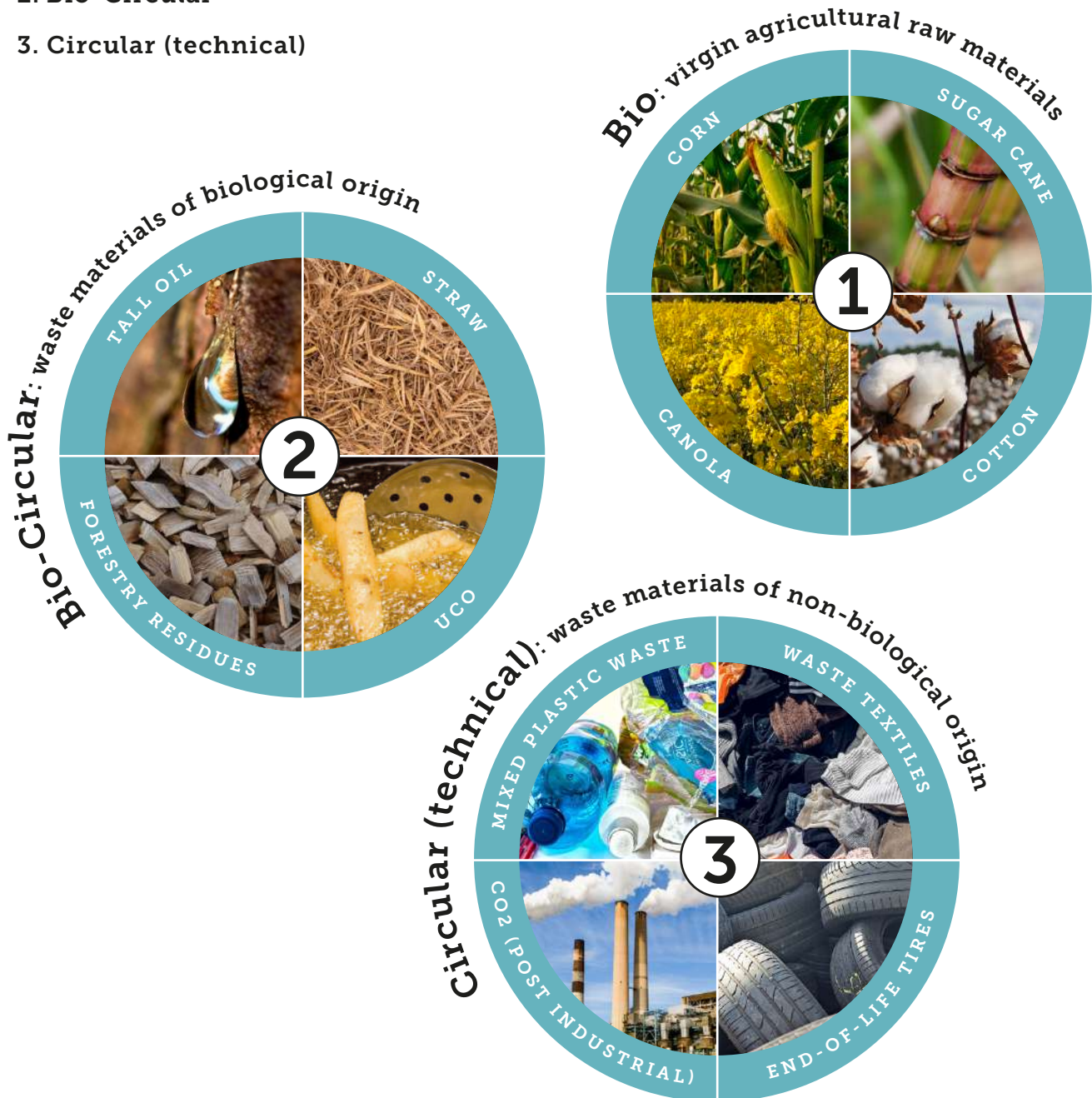


Multi-stakeholder approach with a continuous dialogue

# Examples of ISCC PLUS certified feedstocks

The feedstocks eligible under ISCC are divided into the following raw material categories:

1. Bio
2. Bio-Circular
3. Circular (technical)



# ISCC's Sustainability Principles

Further information on the six ISCC Principles can be found in the [ISCC EU System Documents 202 - Sustainability Requirements](#).

## Our principles:



**Principle 1** - Protection of biodiverse and carbon-rich areas



**Principle 2** - Good agriculture practices



**Principle 3** - Safe working conditions



**Principle 4** - Compliance with human, labour and land rights



**Principle 5** - Compliance with laws and international treaties



**Principle 6** - Good management practices and continuous improvement

## GHG emissions under ISCC PLUS

Companies can integrate their carbon footprint by applying the "GHG Emissions" Add-on. The calculation methodology is stated in the ['ISCC EU 205 Greenhouse Gas Emissions'](#) and ['ISCC PLUS'](#) system documents.



## ISCC's Traceability and Chain of Custody Requirements

- Every element in the supply chain that generates, processes or trades sustainable material must be covered by certification
- Certification starts with the Farm/Plantation for agricultural materials and for waste and residue-based supply chains with the Point of Origin
- Farms/Plantations and Points of Origin have several options to be covered by certification. Please find more information in the '[ISCC 203 - Traceability and Chain of Custody](#)' system document
- For certain market activities group certification setups are possible

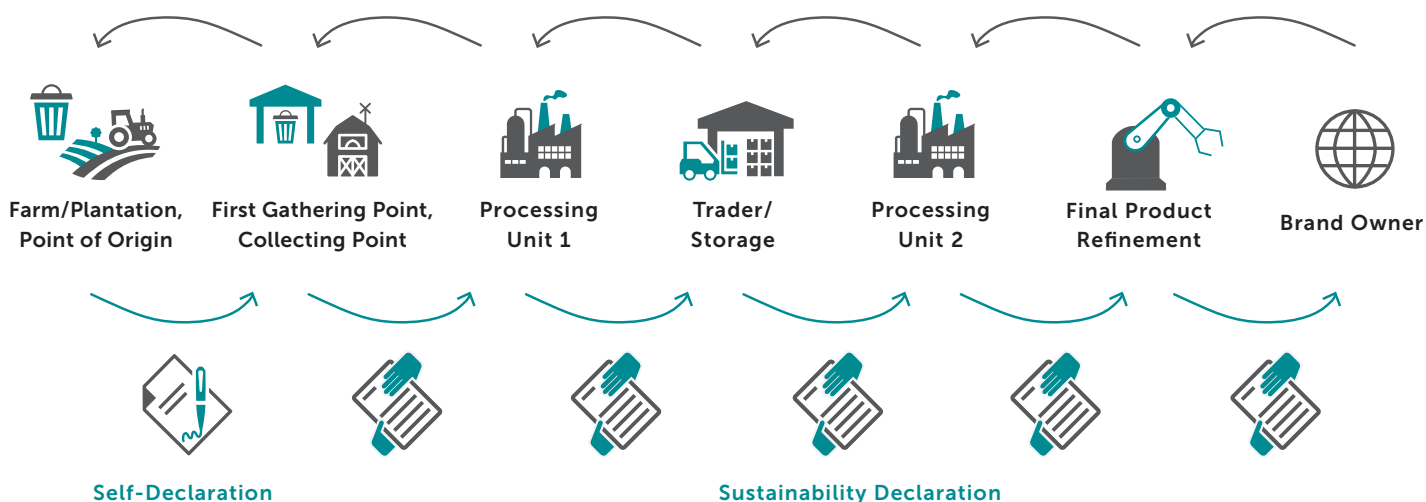
### Agricultural feedstocks and agricultural crop residues



### Waste and processing residues



### Sustainable products can be tracked back step by step. The first element in the supply chain issues a self-declaration



Farms/Plantations or Points of Origin that are not individually certified issue self-declarations to the group head (ISCC template for mandatory use can be found in the client section [here](#)).

Individually certified market operators issue sustainability declarations for sustainable materials and products to the next element in the supply chain (templates from ISCC for voluntary use can be found in the client section [here](#)).

The relevant requirements are provided in the '[ISCC EU 203 Traceability and Chain of Custody](#)' and '[ISCC PLUS](#)' system documents.

With an ISCC PLUS certification along the entire supply chain it is possible to make credible claims to external stakeholders.

## ISCC off-product logo:



The ISCC corporate logo can be used on marketing materials, websites, sustainability reports, sustainability declarations, corporate materials and in email signatures.

You can also find more information in the [ISCC 208 Logos and Claims](#) document.

## ISCC on-product logo(s):

Logos depend on the type of raw material category and chain of custody option:

### 1) Circular

a) mass balance



b) physical segregation



### 2) Bio-Circular

a) mass balance



b) physical segregation



### 3) Bio

a) mass balance



b) physical segregation



## Here are some examples of possible claims under ISCC:

### Physical segregation:

- This product is based on sustainable certified raw materials
- This product is made from certified raw material based on the ISCC sustainability requirements
- This product is made from ISCC certified sustainable feedstock/raw material

### Mass balance:

- By using ISCC certified recycled plastics, this product contributes to the circular economy
- We replaced virgin fossil resources with recycled material during the production of this product (via the ISCC mass balance approach)
- The production of this bottle supports the recycling of plastic by using the ISCC mass balance approach

For approval to use an ISCC logo or ISCC related claims and to obtain the applicable ISCC logo for your purpose, please fill in [this form](#) on our website. You can also find more information in the [ISCC 208 logos and claims document](#).

## ISCC Licensing Scheme

The ISCC licensing scheme allows brand owners and retailers to use the ISCC logo and communicate related claims. It complements the ISCC certification approach as the entire upstream supply chain must be ISCC certified.

In this way, the licensing scheme allows for full traceability up to the final product.

Specific criteria for the use of the license apply - please find more information on the ISCC website [here](#).

You have decided to opt for an ISCC certification – these are the steps!



### 1. Selection of a Certification Body (CB)

- Choose a certification body (CB) and sign a contract with them.
- A list with all recognised CBs is provided on our [website](#).

### 2. Registration as ISCC System User

- Register with ISCC and fill in a [registration form](#).
- Please also find the [terms of use](#) on our website.

### 3. Audit conducted by the CB

- Set up an audit team.
  - Become familiar with the ISCC requirements.
  - [ISCC PLUS system document](#) (outlines the differences to other relevant ISCC EU system documents).
  - [ISCC audit procedures](#) (scope-specific)
    - [ISCC PLUS Sustainability Declaration](#) (template for voluntary use)
    - ISCC document checklists for audit preparation and further information can be found in the [client section of the ISCC website](#).
  - Conduct an internal audit based on audit procedures.
  - Identify and complement missing information from your gap analysis.
- Get audited by your certification body:**
- Please find the fee structure [here](#) (CB audit costs not included).
  - Provide all necessary proof, documents and access to relevant locations.
  - Implement the corrective measures within 40 days (if applicable).

### 4. CB issues the certificate

- CB has 60 days after the audit to issue the certificate.
- CB forwards audit documents to audited company and ISCC.
- Now you can start handling certified material.

### 5. Internal review by ISCC

- ISCC conducts an internal review of the received audit documents.

### 6. ISCC publishes certificate on website

- Finally, you will find all valid certificates [here](#).

### Further useful links to the ISCC website:

- [Industrial Applications](#)
- [ISCC PLUS Training](#)
- [Technical Stakeholder Committee “Circular Economy and Bioeconomy”](#)
- [Certification Process Overview](#)

# Frequently Asked Questions

## How many certificates do I need?

ISCC certificates are site specific, which means that per legal entity and per location one certificate is necessary. Under this certificate several inputs/ outputs, raw material categories and market activities (processing, storing, etc.) can be covered.

## What is the validity of a certificate?

The validity period of an ISCC certificate is one year – precondition is the successful audit.

## Which certification bodies do you cooperate with and do they have auditors in all countries?

Please find all the certification bodies that ISCC cooperates with [here](#) on our website. Many work on a global basis. Please get in touch with the contact person for more information regarding your specific set-up.

## How long does it take to receive a certificate?

This depends on the company's internal preparation and auditor availability. Please contact a cooperating certification body first and discuss capacities with them.

## Which requirements are relevant for certification under ISCC?

The requirements to be fulfilled depend on the scope of the company to be certified. The [ISCC audit procedures](#) are scope-specific and provide all relevant requirements. The audit procedures are based on the [ISCC Systems Documents](#).

## Does the final product manufacturer need to be certified?

Yes, in order to forward the material as ISCC certified (e.g. because they or their client would like to make a claim) the final product manufacturer needs to be covered by certification.

## Does a brand owner need to be certified?

Brand owners who sell ISCC certified material with the ISCC logo need to be covered either by certification or a license, if applicable.

## Do I need ISCC certified material before the certification can start?

Please note that the receipt of sustainable material is only possible if the recipient has a valid certificate at the date of dispatch (ISCC System Document 203). For an initial audit you need to prepare templates and other documents (please see the [check lists](#) in the client section) but cannot have ISCC material in stock.

## What are the benefits of membership in the ISCC Association and how do I or my organisation become a member?

As a member, you will receive privileged access to information, the option to participate in the ISCC general assembly, stakeholder meetings, conferences, and regional and technical committees, have active influence on strategy and future developments of the ISCC System, etc. To become a member of the [ISCC Association](#) please fill out this [form](#) and return it by fax or e-mail to [info@iscc-system.org](mailto:info@iscc-system.org). It is not mandatory to become a member in order to receive an ISCC certificate.

**For any additional questions, please contact**  
[info@iscc-system.org](mailto:info@iscc-system.org)

ISCC System GmbH

Hohenzollernring 72

50672 Köln

Germany

Amtsgericht Köln HRB 68185

Tel.: +49 221 50802010

Fax: +49 221 50802099

[info@iscc-system.org](mailto:info@iscc-system.org)

[www.iscc-system.org](http://www.iscc-system.org)