

ARIA: a New GRAS Platform for an Automated ISCC Principle 1 Risk Assessment

Ilknur Celik Schoreels & Ali Zomorodian

ARIA Platform Webinar for CBs, Auditors & System Users

25 October 2022, Virtual Meeting

ARIA

Automatic Risk Assessment Platform



Introduction to ARIA



How does automatic risk assessment work?



Platform Demo & Sample Reports



Outlook and ARIA for ISCC

Background

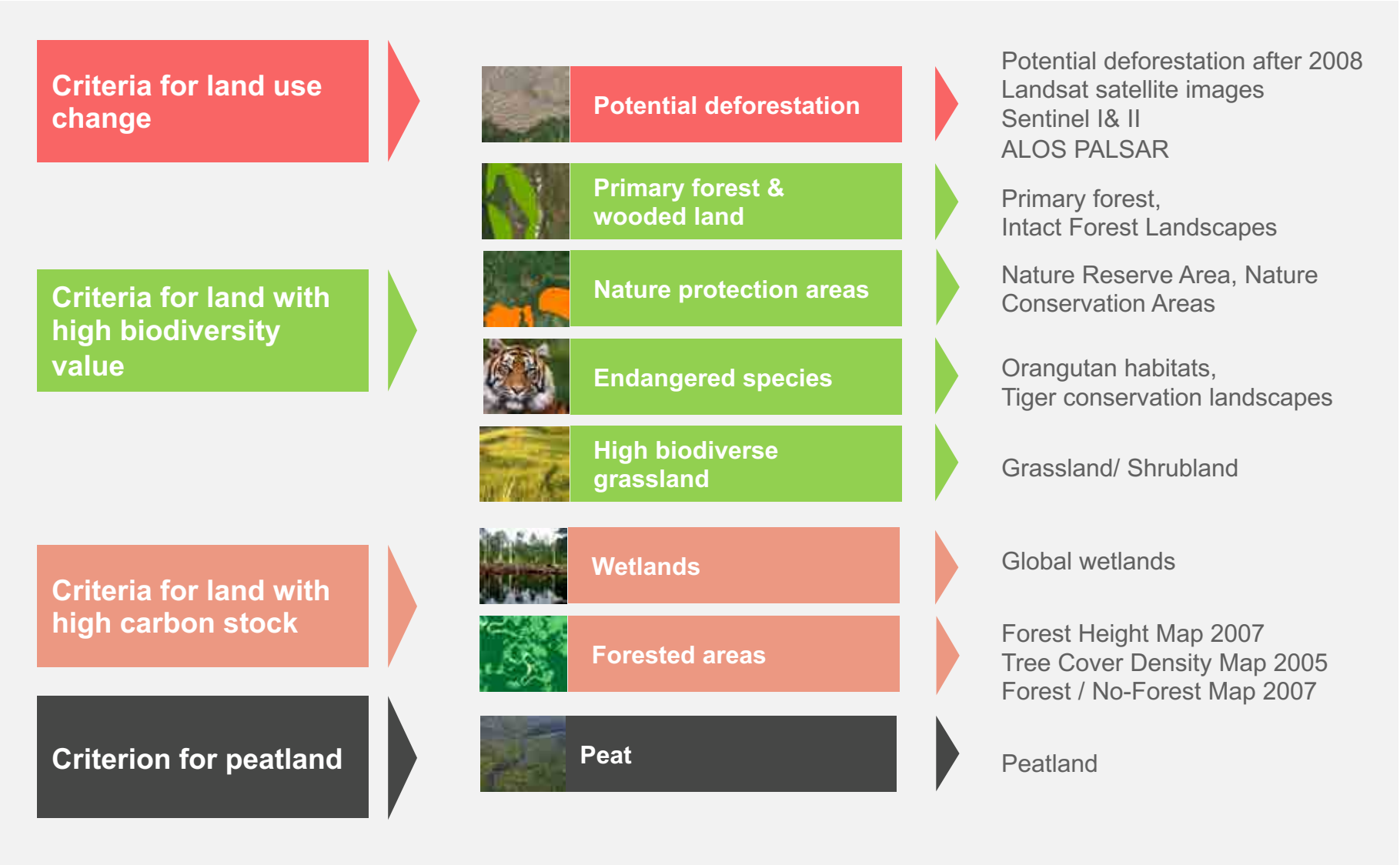
- European Commission is considering new rules for improving the state of EU-driven deforestation
- Palm oil is one of the six commodities which must have a fully traceable supply chain and deforestation free sourcing
- Lack of harmonised method for the ISCC system users to verify Land Use Change (LUC)
 - an ISCC LUC Template needs to be filled out which often lacks crucial information and leads to a lengthy reviewal process and/or communication chain between system users, CBs and ISCC

00.07.06	<u>Did land use change take place after January 2008?</u> If LUC after 2008 took place, please provide a detailed explanation specifying how compliance with ISCC was verified (evidence should include e.g. remote-sensing technology, pictures of the on-site visit, approach to determine land category, further tools etc.)	<input checked="" type="checkbox"/> yes, If yes, please specify the type of land use change: <input type="checkbox"/> no Please note that the statement should be provided in separate document
----------	--	---

ARIA: Automatic Risk Assessment Platform

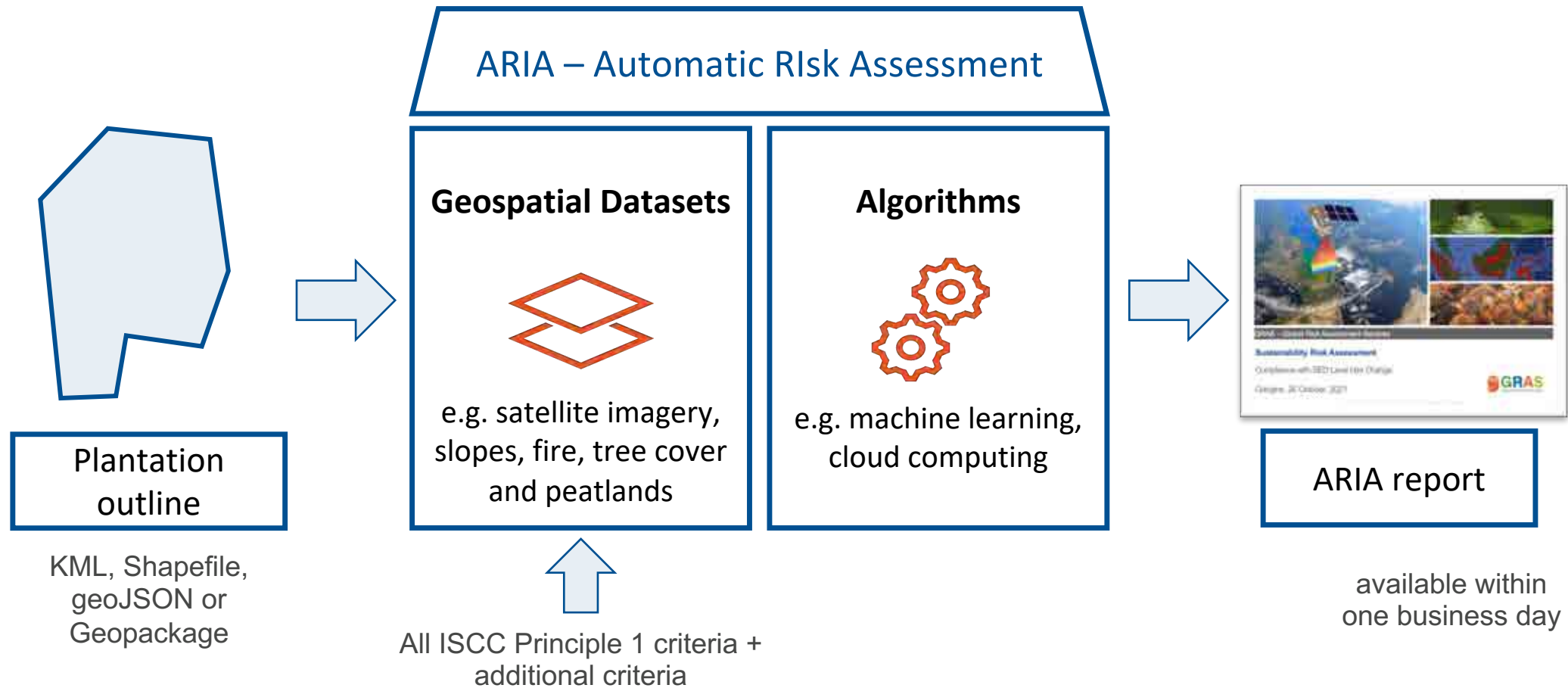
- ARIA is a risk assessment platform for compliance with ISCC Principle 1 as well as soil erosion from Principle 2 and in general with EU Renewable Energy Directive (RED)
- ISCC system users can use the platform to generate fully automated, comprehensive risk reports at the plantation level within just a few minutes.
- ARIA is not limited to ISCC, but also could be used for any RED voluntary certification scheme

GRAS has translated all ISCC Principle 1 criteria into geospatial datasets



**RED
requirements/ISCC
Principle 1**

ARIA is an integrated system that includes both geospatial data and algorithms for cost-effective report generation



ARIA Automated risk assessment reports as the innovative solution

- Level playing field among system users and CBs
- Support ISCC system users
- Simplify auditing and reduce auditing costs
- Building block towards including further legislation/due-diligence requirements

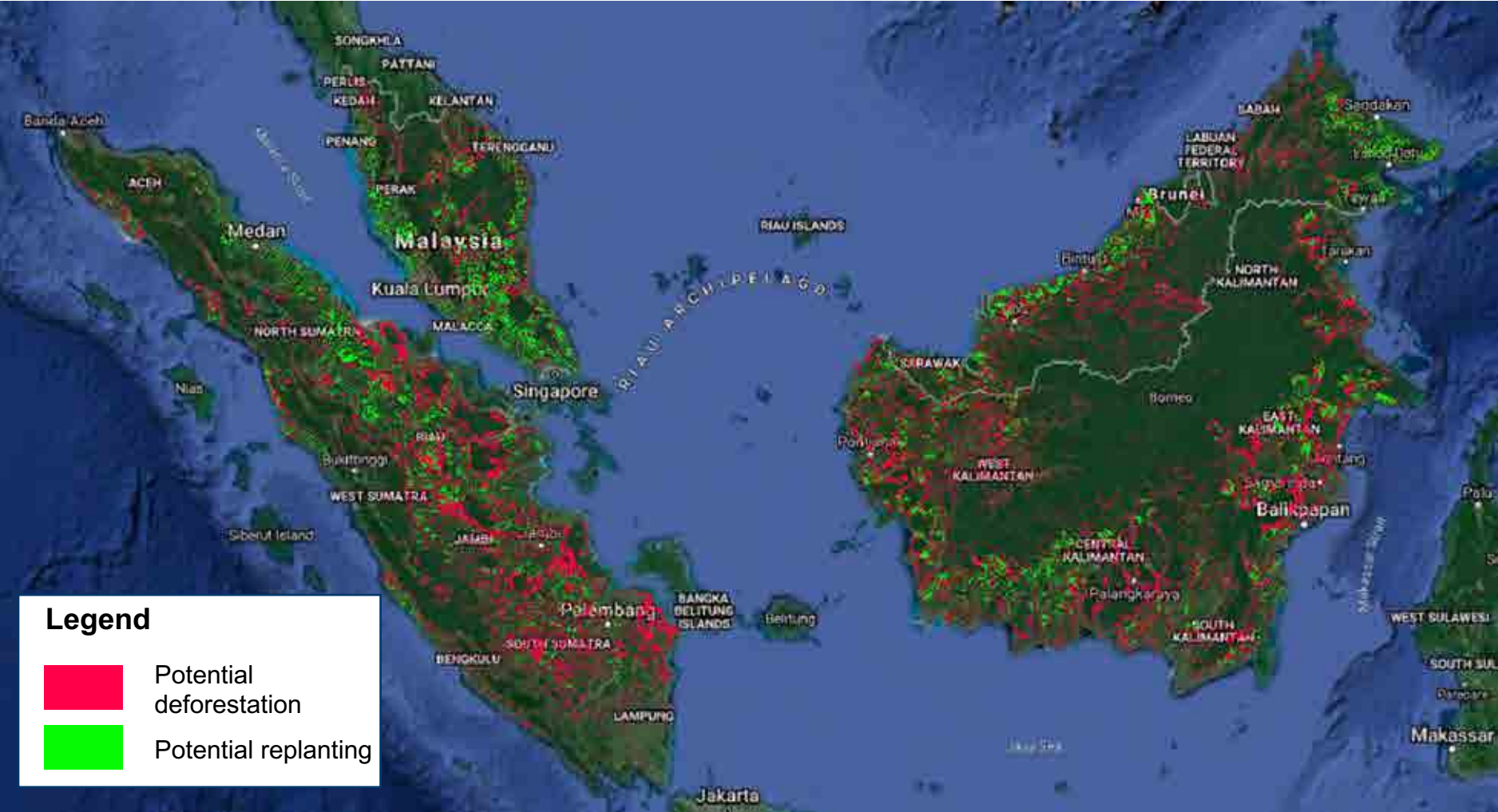
Differences to the GRAS Tool

The ARIA Platform differs from the already available GRAS Tool in several different aspects



- Geographical focus
 - Indonesia and Malaysia only
- Datasets match the ISCC Principle 1's criteria
- Separate detection of potential deforestation and replanting
- Additional datasets (e.g. slopes, waterbodies)
- Analysis of plantation outline, not a general sourcing area as in the GRAS Tool

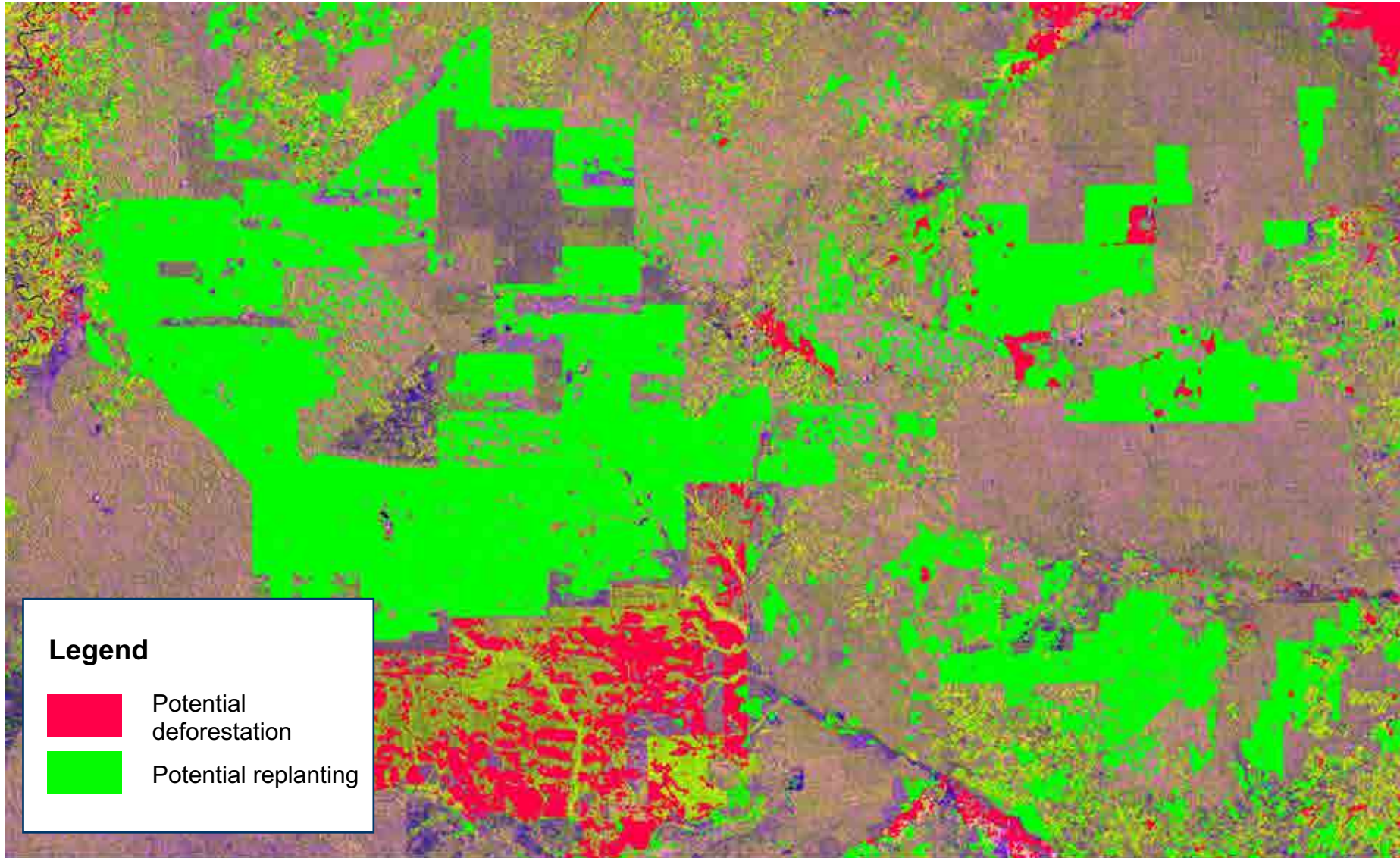
Differences with GRAS Tool: Example, palm replanting map



Differences with GRAS Tool: Potential deforestation map available in GRAS Tool



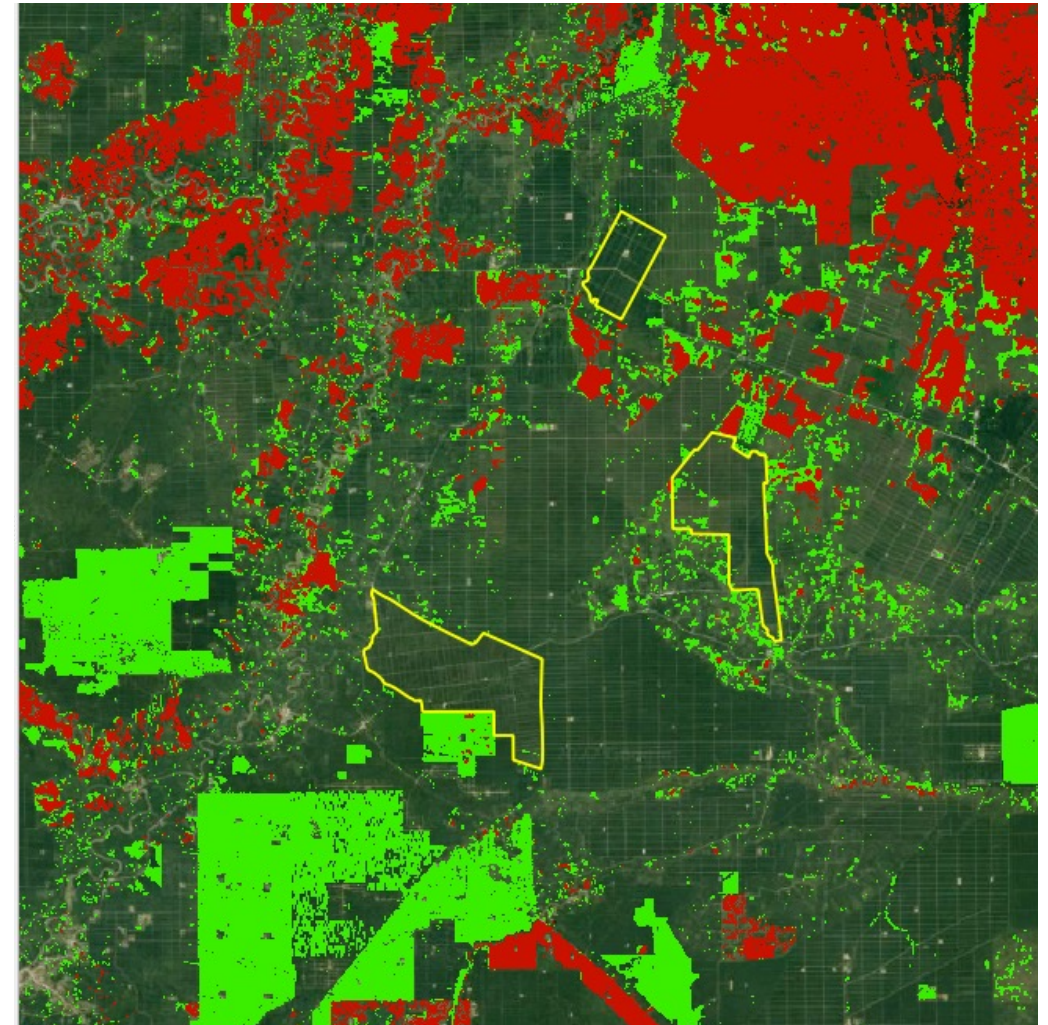
Differences with GRAS Tool: Potential replanting and potential deforestation in ARIA



Differences with GRAS Tool: Results in finer spatial scale



GRAS Tool



ARIA



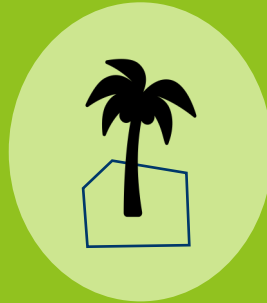
Demo

Automated Risk Assessment of Palm Plantations with a few steps



Step 1:
Create account

Create an account with
your email address



Step 2:
Upload plantation outline

Add one or multiple
plantations/estates



Step 3:
Select settings

Confirm outlines and
execute payment



Step 4:
Receive report

View results within one
business day



System Users' Vouchers and ISCC timeline

ISCC's timeline for the use of ARIA

- ISCC has supported the development of the ARIA Platform
- ISCC system users can request free ARIA vouchers for auditing in all three phases
- **Phase 1 Voluntary: 1st November 2022 – 31st January 2023**
 - ARIA online training (1st November 2022)
 - ISCC system users may get vouchers for recertification and initial process
 - Feedback is highly appreciated
- **Phase 2 Transition: 1st February 2023 – 30th April 2023**
 - Auditors are encouraged to attend ARIA training
 - ARIA use is recommended for recertification and initial certification audits
- **Phase 3 Mandatory: starting from 1st May 2023 in Indonesia and Malaysia**
 - ARIA training mandatory to auditors
 - All ISCC system users provide the ARIA report as a part of the auditing process

Sample Report



Thank you for
your attention!



- GRAS Global Risk Assessment Services GmbH
- Hohenzollernring 72, 50672 Cologne, Germany
- Email: info@gras-system.org
- Website: www.gras-system.org