



A Practical Example of an ISCC PLUS Certification as a Converter

Robert Flores
VP Sustainability
Berry Global

Impact 2025 Our Sustainability Strategy

Products

Minimize product impacts

Optimize Design

- 100% reusable, recyclable, or compostable packaging by 2025
- Minimize carbon footprint
- Lightweight products

Sustainable Materials

- 10% recycled content across our packaging by 2025
- 30% circular plastics by 2030

Performance

Minimize operational impacts

Climate Change

- Science-Based Target: Reduce absolute emissions (scopes 1-3) 25% by 2025 vs. 2019
- Increase renewable energy YOY

Continuous Improvement

- Reduce landfill waste intensity 5% YOY
- Reduce energy and water consumption intensity 1% YOY

End Plastic Waste Locally & Globally

- Prevent resin loss through OCS
- Implement OCS at acquisition sites within the first year

Partners

Engage partners, including employees, suppliers, customers, and communities on key issues

Employees

- Injury Free Workplace (2022 TRIR < 0.85)
- Focus on employee experience, including Diversity and Inclusion
- Expand training & development opportunities

Stakeholders

- Respect human rights in our policies and supply chains
- Conduct business ethically

[See how](#) we perform against our Impact 2025 goals and align with the United Nations

**SUSTAINABLE
DEVELOPMENT GOALS**



When partnering with **Berry Global** against short and long term sustainability goals, you can experience the benefits of **more**.

more expertise

We will partner with your team to educate on advances in resin material science, manufacturing, and design for circularity

more capabilities

Berry's 300 locations, over 35 product lines, and 65 conversion processes allow you to prioritize and fulfill your sustainability initiatives, achieving the greatest impact for your investment

more scale

Berry's global footprint and leading purchasing scale offers unique access to uninterrupted raw material supply and high quality sustainable polymers

more investments

Berry leads the industry in investments to help meet the needs of the circular economy and ensure recycling and reuse of your product's packaging

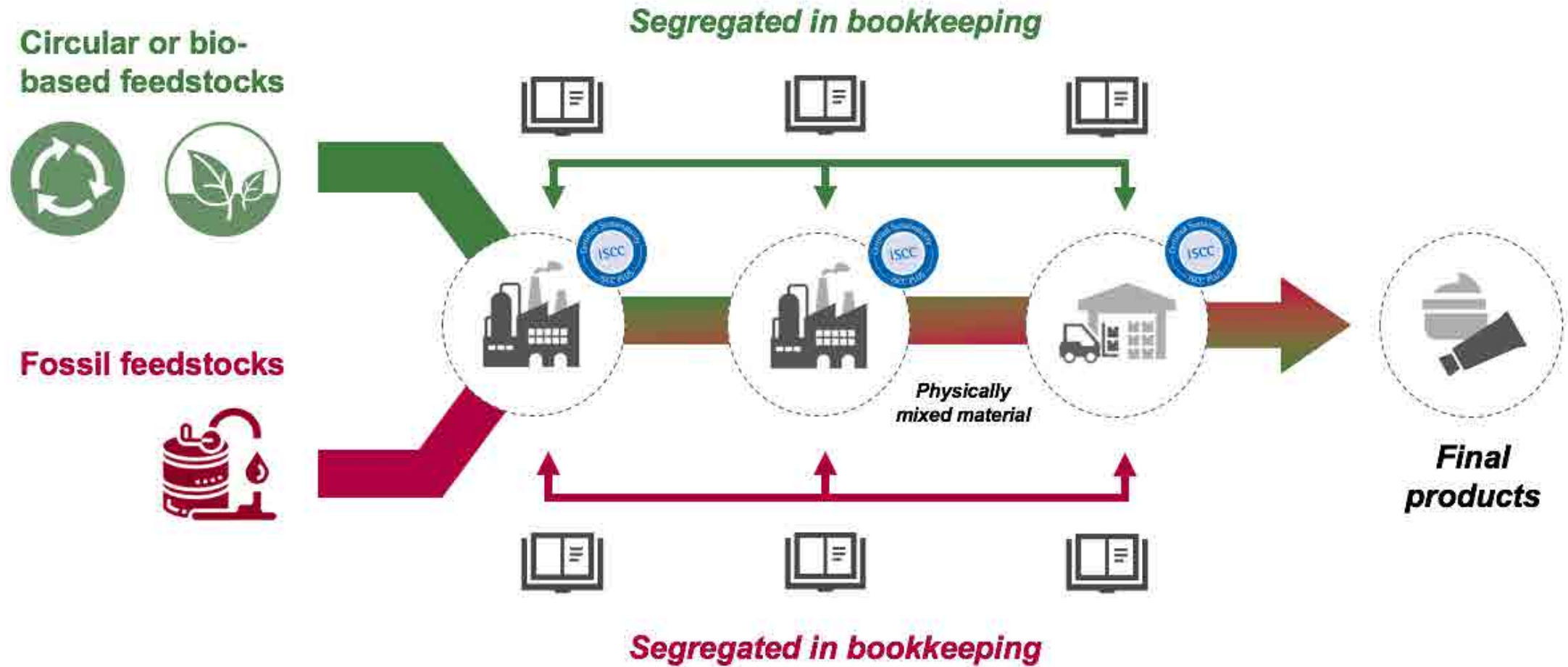


Unparalleled capabilities with Recycled & Renewable Content

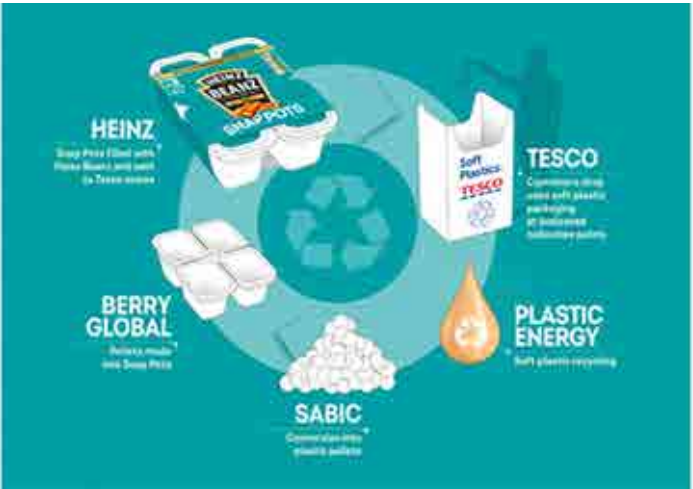


Berry Global's proprietary CleanStream® process recently received an FDA No Objection Letter (NOL)

Mass Balance Bookkeeping



Accelerating Recycled & Renewable Feedstocks with ISCC PLUS



2nd Generation bio-feedstocks from wastes/residues, e.g. used cooking oil



NESTE



Summary

Plastics are increasingly using recycled & renewable feedstocks

Mass balance helps accelerate transition from fossil fuels

- ISCC PLUS is the leading certification
- Berry Global and subsidiaries have over 50 ISCC PLUS-certified manufacturing sites across 3 continents

Plastics must decarbonize to achieve net zero





Thank You