

Official Launch of the ARIA Platform

Automatic Risk Assessment for ISCC principle 1

Mohammad Abdel-Razek

TC SEA

18 October 2022, Hybrid Meeting

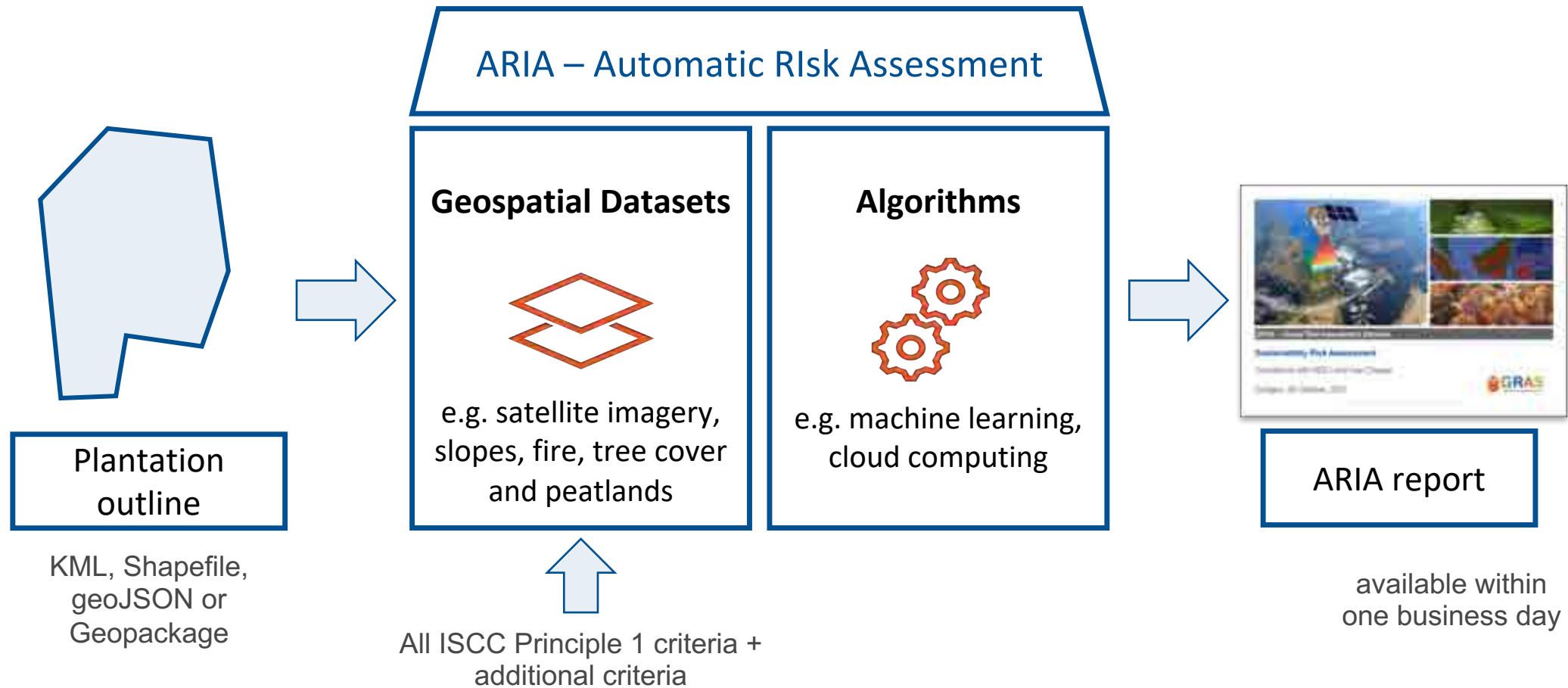
ARIA: Automatic Risk Assessment Platform

- The ARIA Platform is in compliance with ISCC Principle 1 and in general with EU Renewable Energy Directive (RED) and available for palm plantations in Indonesia and Malaysia
- The platform can generate fully automated, comprehensive risk reports at the plantation level within the one-business day
- ARIA also include other datasets that supports ISCC users getting to know other environmental risks on their plantations, e.g., fire.
- ARIA is not limited to ISCC, and could also be used for any RED voluntary certification scheme

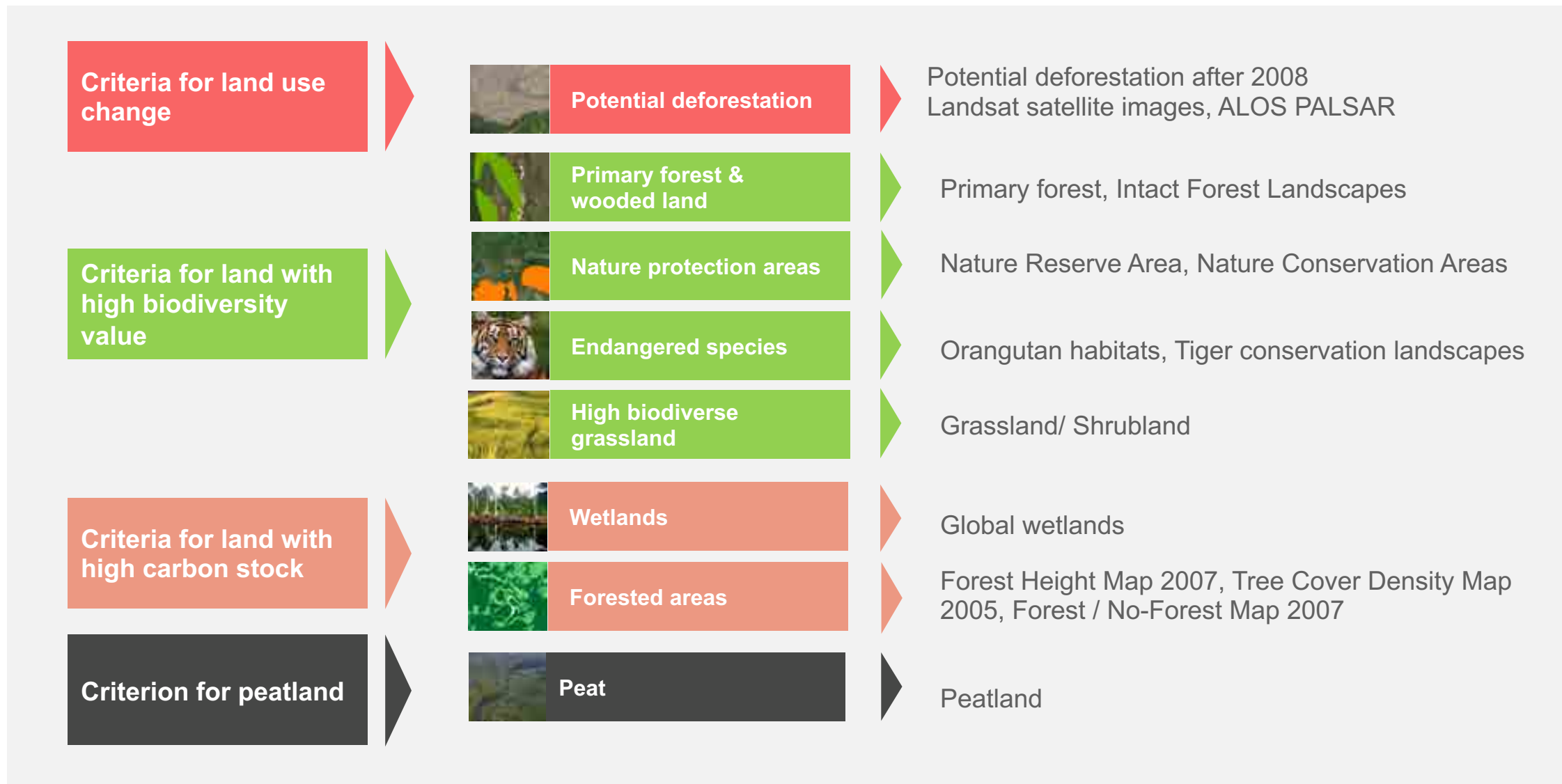
Why ARIA?

- Level playing field among system users and CBs
- Support ISCC system users
- Simplify auditing and reduce auditing costs
- Building block towards including further legislation/due-diligence requirements

ARIA is an integrated system that includes both geospatial data and algorithms for cost-effective report generation



All four RED/ISCC P1 criteria are included in ARIA

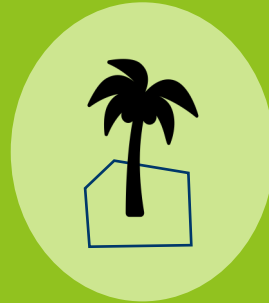


Automated Risk Assessment of Palm Plantations with a few steps



Step 1:
Create account

Create an account with
your email address



Step 2:
Upload plantation outline

Add one or multiple
plantations/estates



Step 3:
Select settings

Confirm outlines and
execute payment



Step 4:
Receive report

View results within one
business day

ISCC's timeline for the use of ARIA

- Webinar with Stakeholders (25th October 2022, 9:30 am Berlin – 2:30 pm Indonesia – 3:30 pm Malaysia)
- ISCC system users can request free ARIA vouchers for auditing in all three phases
- **Phase 1 Voluntary: 1st November 2022 – 31st January 2023**
 - ARIA online training (1st November 2022)
 - ISCC system users may get vouchers for recertification and initial process
 - Feedback is highly appreciated
- **Phase 2 Transition: 1st February 2023 – 30th April 2023**
 - Auditors are encouraged to attend ARIA training
 - ARIA use is recommended for recertification and initial certification audits
- **Phase 3 Mandatory: starting from 1st May 2023 in Indonesia and Malaysia**
 - ARIA training mandatory to auditors
 - All ISCC system users provide the ARIA report as a part of the auditing process

ARIA Demo



Thank you very much!

GRAS Global Risk Assessment Services GmbH
Hohenzollernring 72, 50672 Cologne, Germany

Email: info@gras-system.org, Website: www.gras-system.org