



Converter Perspective on the Use of Sustainable Raw Materials

Robert Flores
VP Sustainability
Berry Global

Impact 2025 Our Sustainability Strategy

Products

Minimize product impacts

Optimize Design

- 100% reusable, recyclable, or compostable packaging by 2025
- Minimize carbon footprint
- Lightweight products

Sustainable Materials

- 10% recycled content across our packaging by 2025
- 30% circular plastics by 2030

Performance

Minimize operational impacts

Climate Change

- Science-Based Target: Reduce absolute emissions (scopes 1-3) 25% by 2025 vs. 2019
- Increase renewable energy YOY

Continuous Improvement

- Reduce landfill waste intensity 5% YOY
- Reduce energy and water intensity 1% YOY

End Plastic Waste Locally & Globally

- Prevent resin loss through OCS
- Implement OCS at acquisition sites within the first year

Partners

Engage partners, including employees, suppliers, customers, and communities on key issues

Employees

- Injury Free Workplace (2023 TRIR < 0.7)
- Focus on employee experience, including Diversity and Inclusion
- Expand training & development opportunities

Stakeholders

- Respect human rights in our policies and supply chains
- Conduct business ethically

**SUSTAINABLE
DEVELOPMENT GOALS**

[See how](#) we perform against our Impact 2025 goals and align with the United Nations

Berry



Expertise

Berry will partner with your team to educate on advances in resin material science, manufacturing, and design for circularity

Scale

Berry's global footprint and leading purchasing scale offers unique access to uninterrupted raw material supply and high quality sustainable polymers



Infrastructure

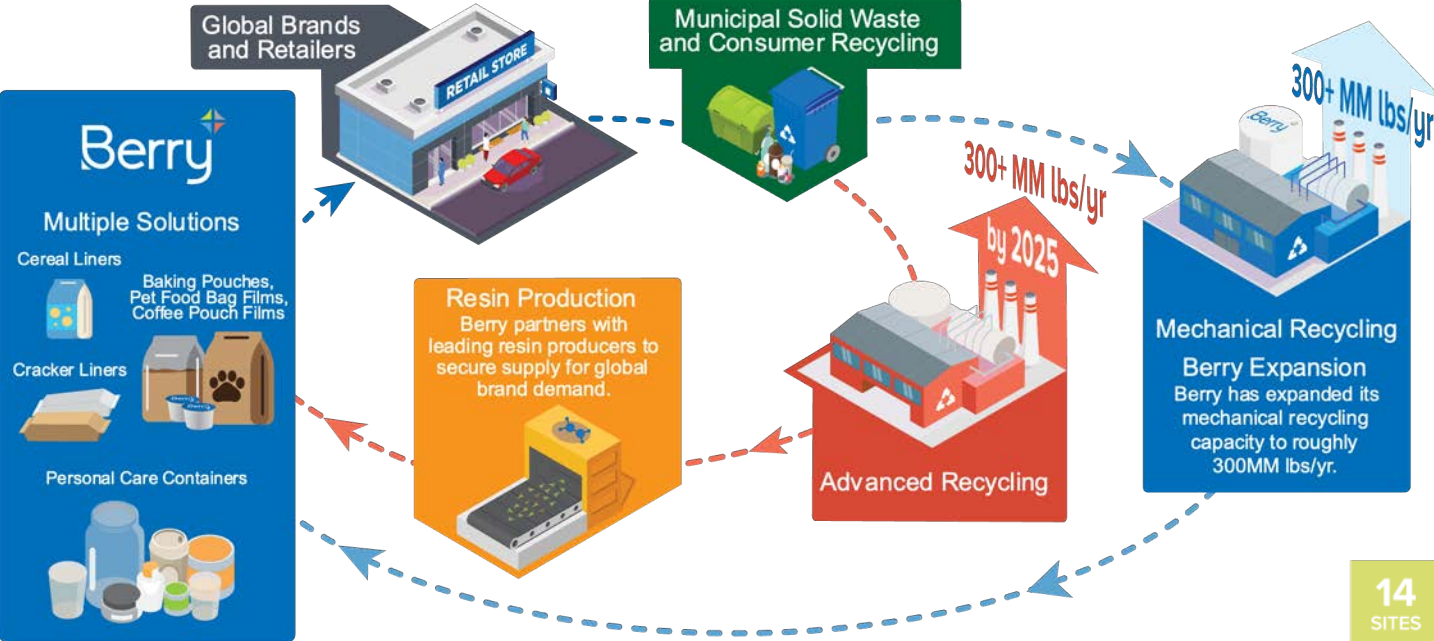
Berry's 265 plants, over 35 product lines, and 65 conversion processes allow you to prioritize and fulfill your sustainability initiatives, achieving the greatest impact for your investment

Investments

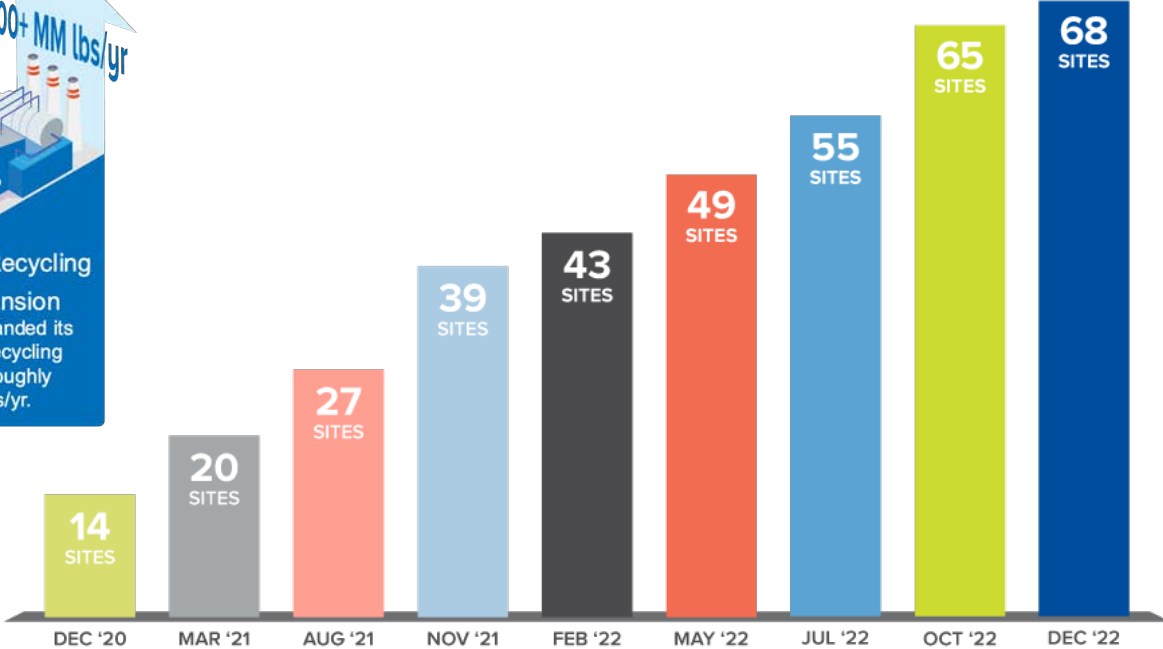
As an industry leader in investments, Berry helps meet the needs of the circular economy and ensure recycling and reuse of your product's packaging



Unparalleled access to Recycled & Renewable Plastic



Berry Global's CleanStream® process recently received an FDA No Objection Letter (NOL)



Berry Global ISCC PLUS-Certified Sites

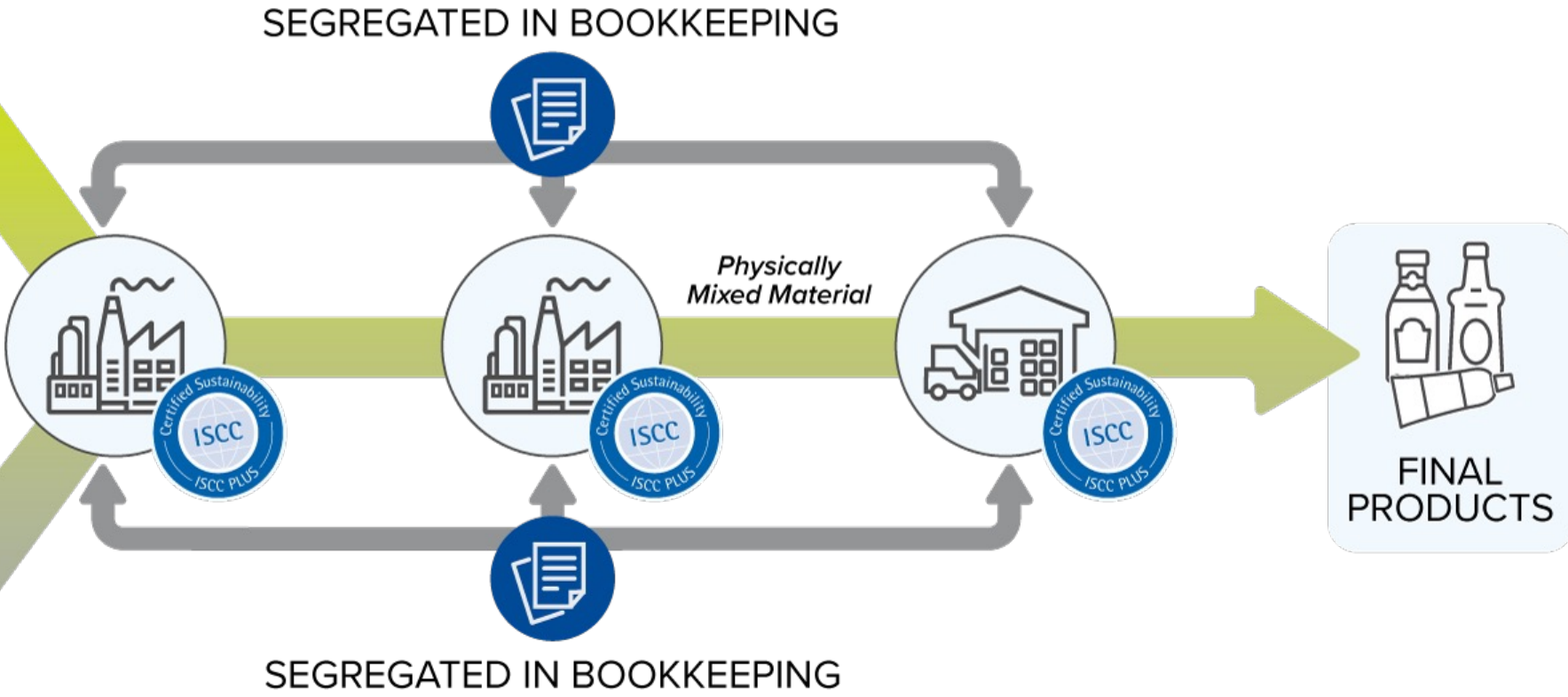


Mass Balance Bookkeeping

CIRCULAR OR BIO-BASED
FEEDSTOCKS



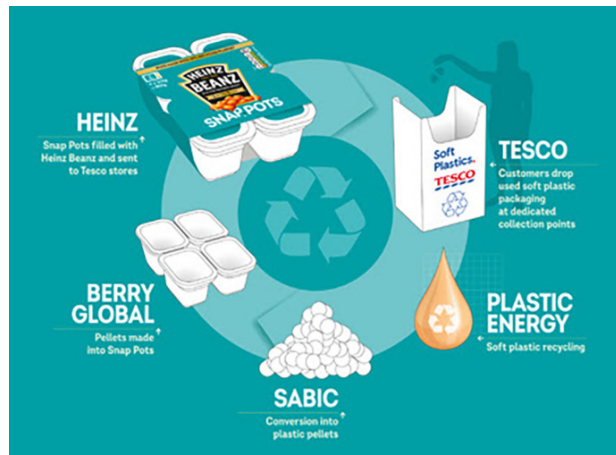
FOSSIL
FEEDSTOCKS



Source: <https://www.iscc-system.org/about/circular-economy/mass-balance-approach/>



Accelerating Recycled & Renewable Plastics with ISCC PLUS



2nd Generation bio-feedstocks from wastes/residues, e.g. used cooking oil



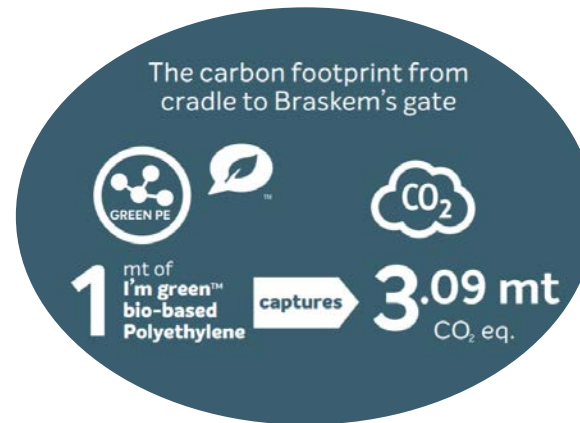


Benefits of a Circular, Net-Zero Economy

Increase demand for post-consumer plastic waste

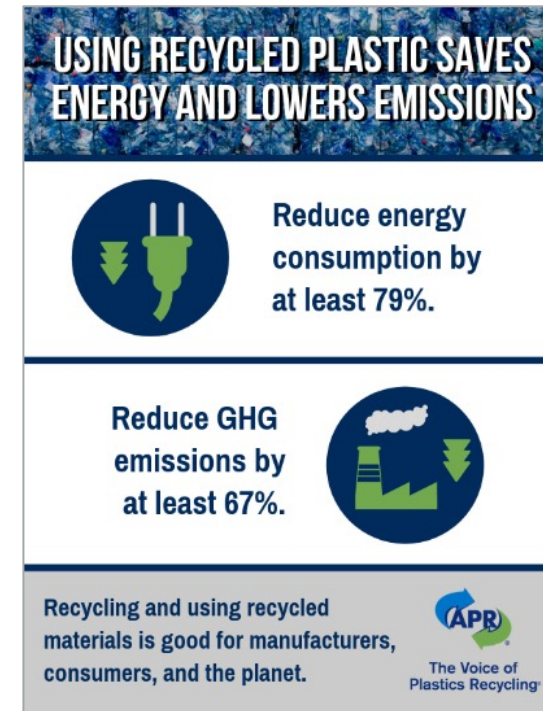
Convert from fossil fuels to renewable resources

Reduce GHG emissions



Source: Braskem

Address Legislation



Source: Association of Plastic Recyclers



Summary

Plastics increasingly using **recycled & renewable** feedstocks

- Improve circularity
- Reduce carbon footprint

Mass balance helps accelerate transition from fossil fuels

- ISCC PLUS is the leading certification
- Berry Global & subsidiaries have 68 ISCC PLUS-certified manufacturing sites across 3 continents

Critical for achieving circular, net-zero economy





Thank You