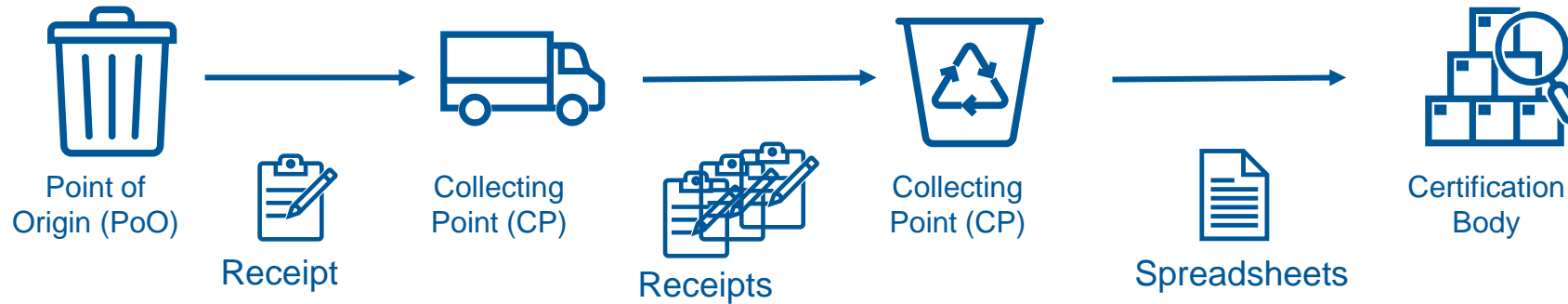




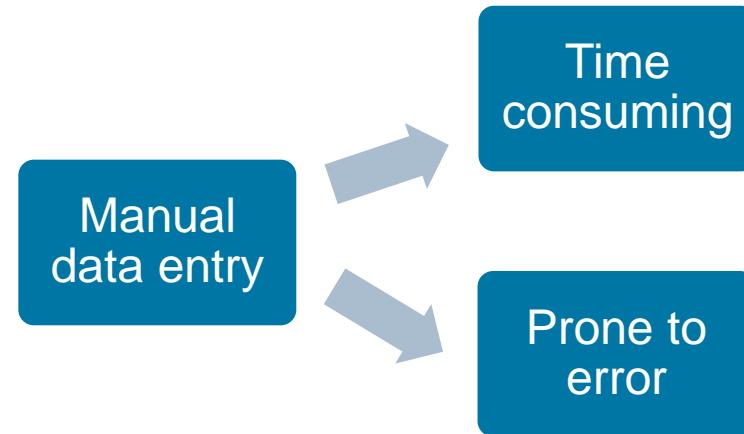
# PoO Registration and Material Uptake Automation with the ISCC Mobile App

Dr Ilknur Celik Schoreels, GRAS Global Risk Assessment Services  
ISCC Waste and Residues Training Add-On, Jakarta, Indonesia &  
Online, 26 October 2023

# PoO Verification & Material Flow Data Challenges



- **Manually fill out forms & receipts**
- **Manually input all PoO data into spreadsheets**
- **Inaccurate data can lead to verification failures, delays in certification, or undetected fraud cases**



# Easy, reliable, transparent digital traceability

- **Digitalising the data flow requirements with an IT solution:**
  - **Easily identify and record PoO data**
  - **Supplement location verification via GPS & Google Maps**
  - **Record and aggregate material details**
  - **One-click confirmations**
  - **Ensure verification via validated data with timestamps**
  - **Enable authenticated data exchange**

Minimise manual  
data entry

Accurate &  
complete data

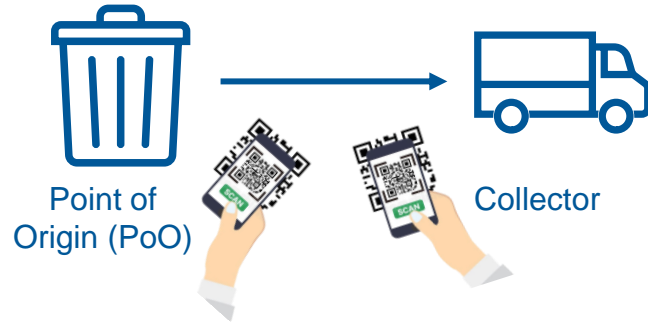
Data exchange in  
real-time

# ISCC Mobile App – Integrated end-to-end solution



- **A CP identifies their users on the ISCC Hub:**
  - **Collector user:** create pickup tours, confirms PoO & material details, deliver to CP/DCP
  - **DCP/CP user:** confirms deliveries
- **PoO user:** self-register PoO data and confirm pickups
- **All transactions are carried out on the Mobile App with a click on a button**
- **PoO verification + material flow is synced to Transaction Database**

# Registering PoO and material pickup verification



- **PoO users self-register their PoO data**
- **Address information is checked against GPS and Map API to verify location**
- **When there is a pickup, the PoO user gets a notification**
- **If offline, QR codes can be scanned**
- **PoO data is saved on the collector app.**

10:04

Hello Test 1

Test POI 1\_1

Rynek 10  
Rzeszow  
12345  
67890

UPDATE POINT OF ORIGIN

2023-10-22 21:58	Unconfirmed
Collecting point 1	
Example item (kg)	5.0kg
Collecting point 2	
Other item (l)	4.0l

VERIFY PICK-UP

10:05

Update point of origin

Business Address

Address line 1\*  
Rynek 1

Address line 2\*

City\*  
Rzeszow

Country\*  
Poland

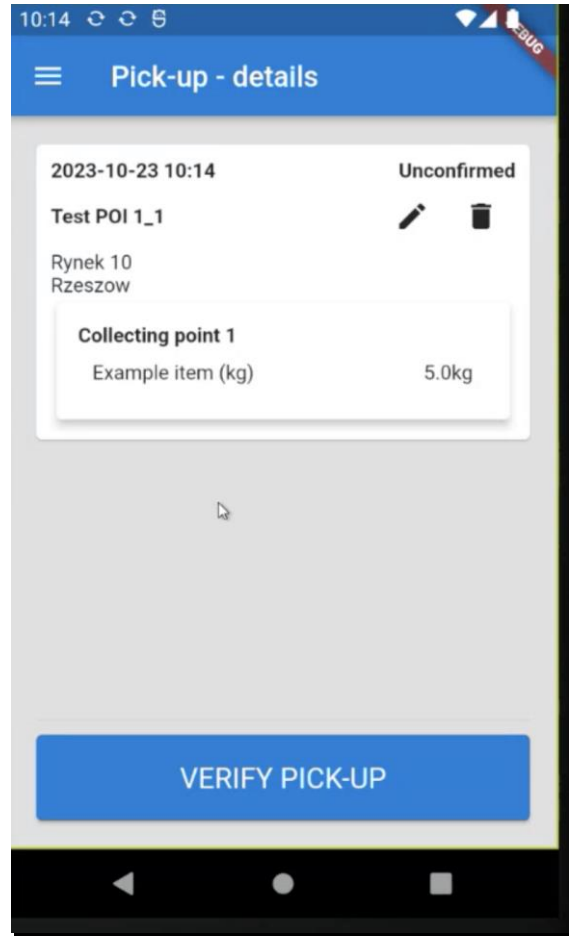
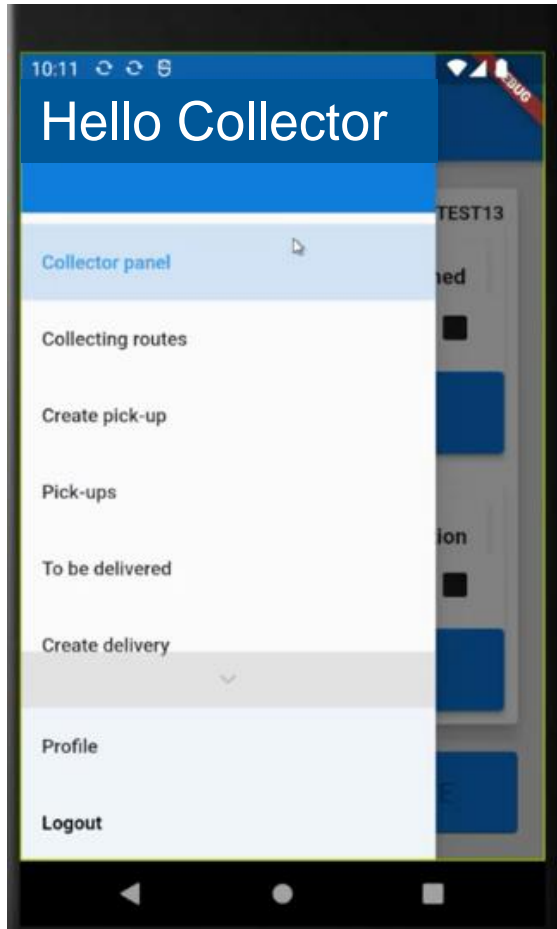
ZIP / Postcode\*  
35-320

Latitude\*  
50.037388

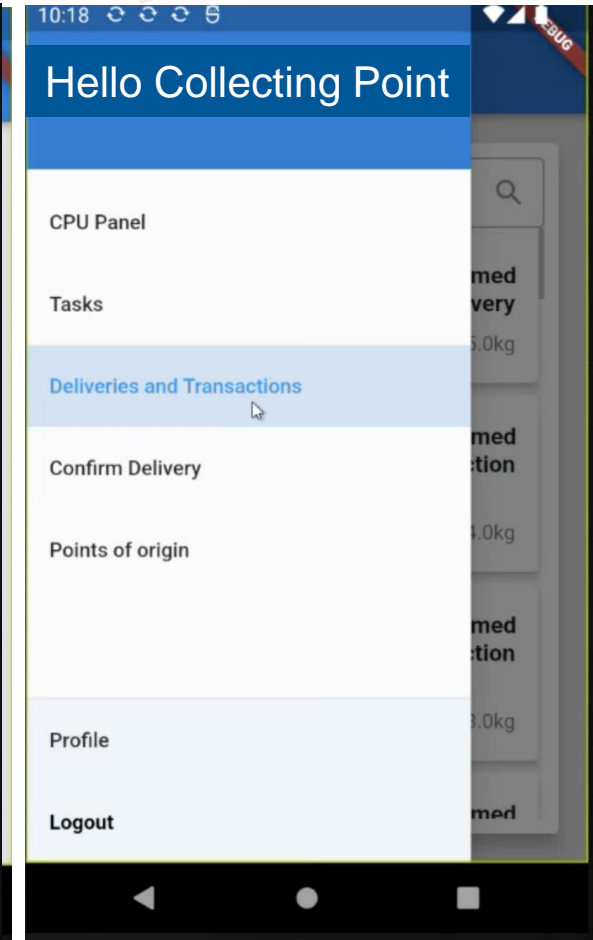
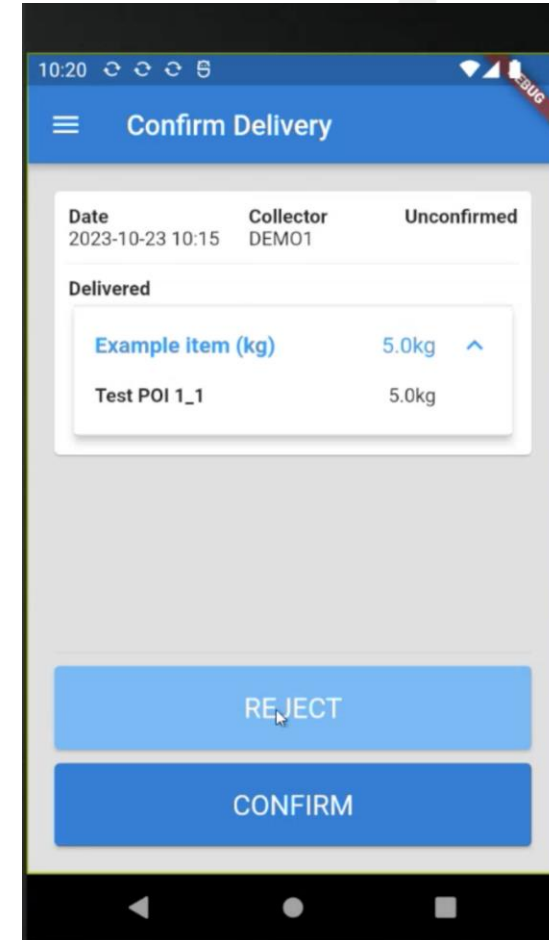
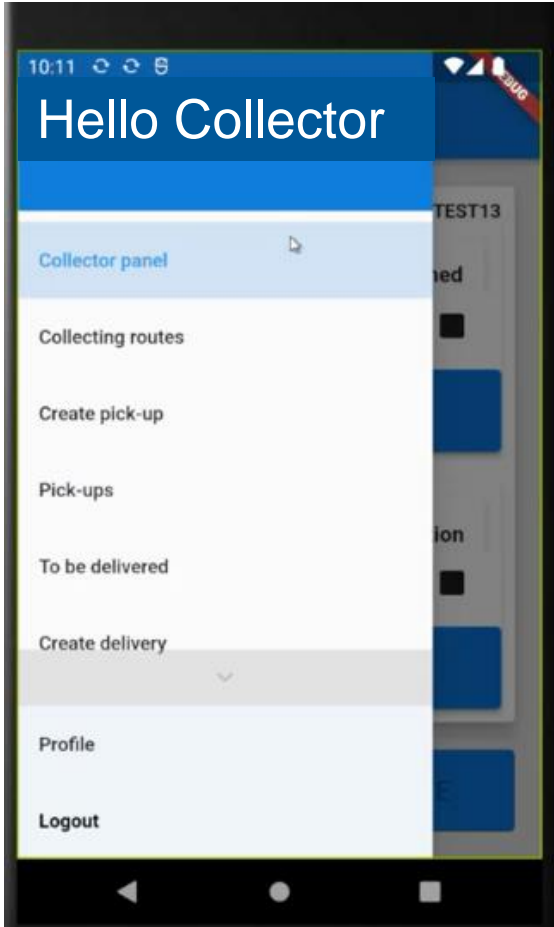
Longitude\*  
22.00405540

SAVE

# PoO and Collector



# Collector & Collecting Point



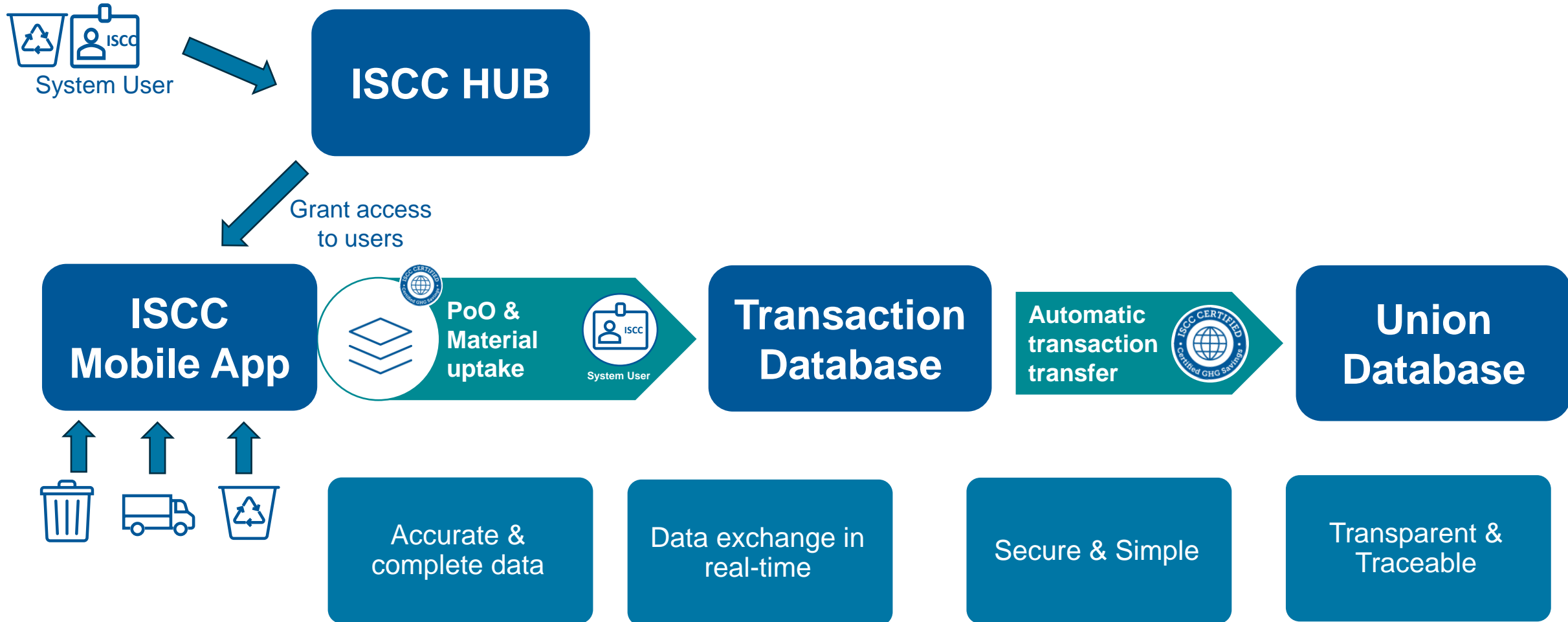
# Automated PoO & Material Uptake data transfer



- **Data of PoOs are synchronised**
  - Existing PoOs' data are updated, if necessary
  - New PoO data is added
- **Delivery details are added as transactions**
  - Detailed information per delivery tour
  - Aggregated view per material/PoO/delivery
- **Amounts are confirmed at each stage**



# ”One stop shopping” – digital ISCC environment





# Thank you!

ISCC System GmbH

Hohenzollernring 72, 50672 Cologne, Germany

[www.iscc-system.org](http://www.iscc-system.org)

