



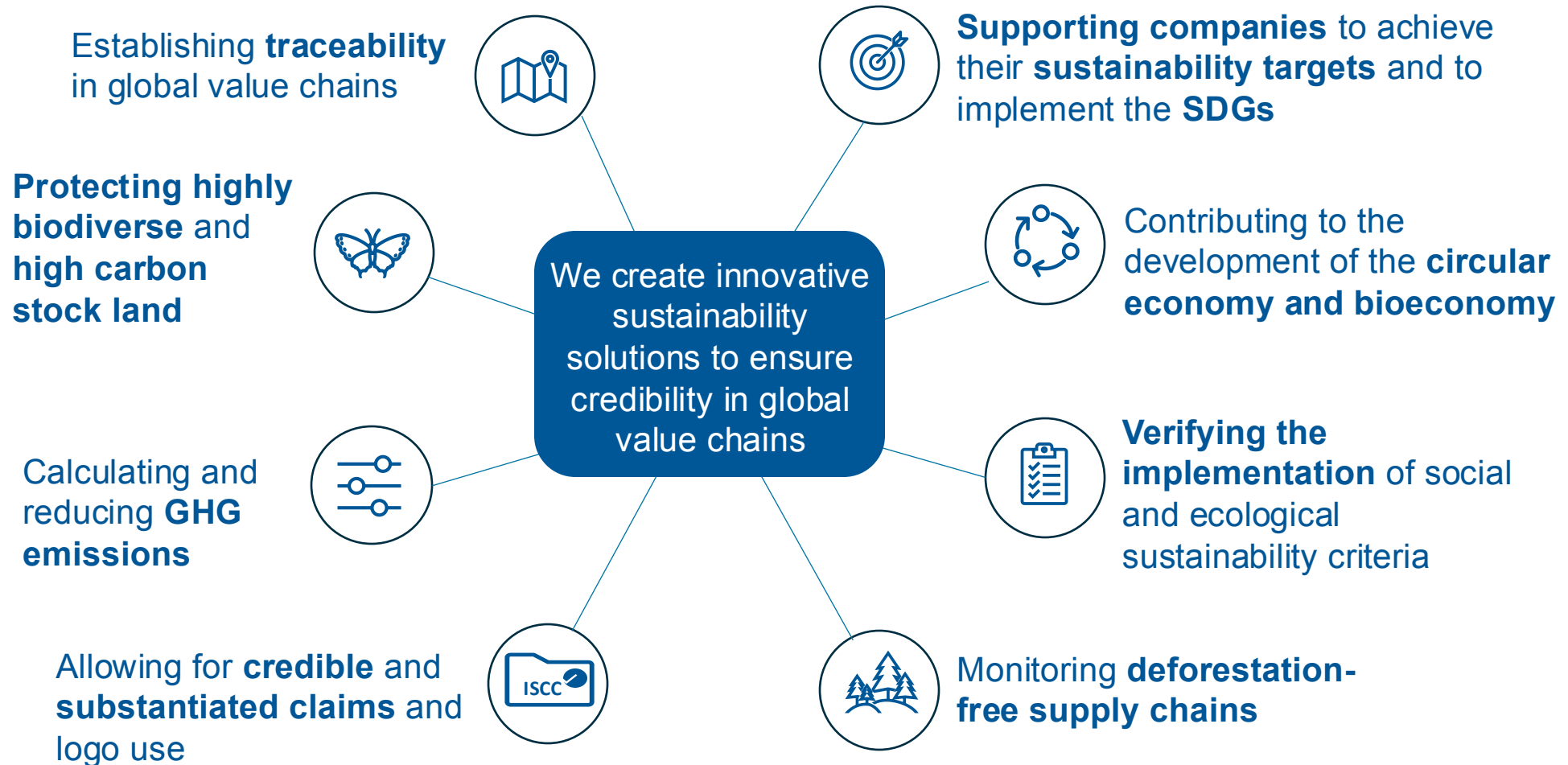
# ISCC Association

**Driving Sustainability Certification  
through Continuous Stakeholder  
Engagement**

ISCC e.V.

February 2025

# ISCC: Advancing Sustainability through Certification





# ISCC at a Glance

**13190+**

Valid certificates



**134**

Total countries



**2100+**

ISCC auditors trained



**260+**

Trainings and Webinars conducted



**310+**

ISCC Association Members



**67**

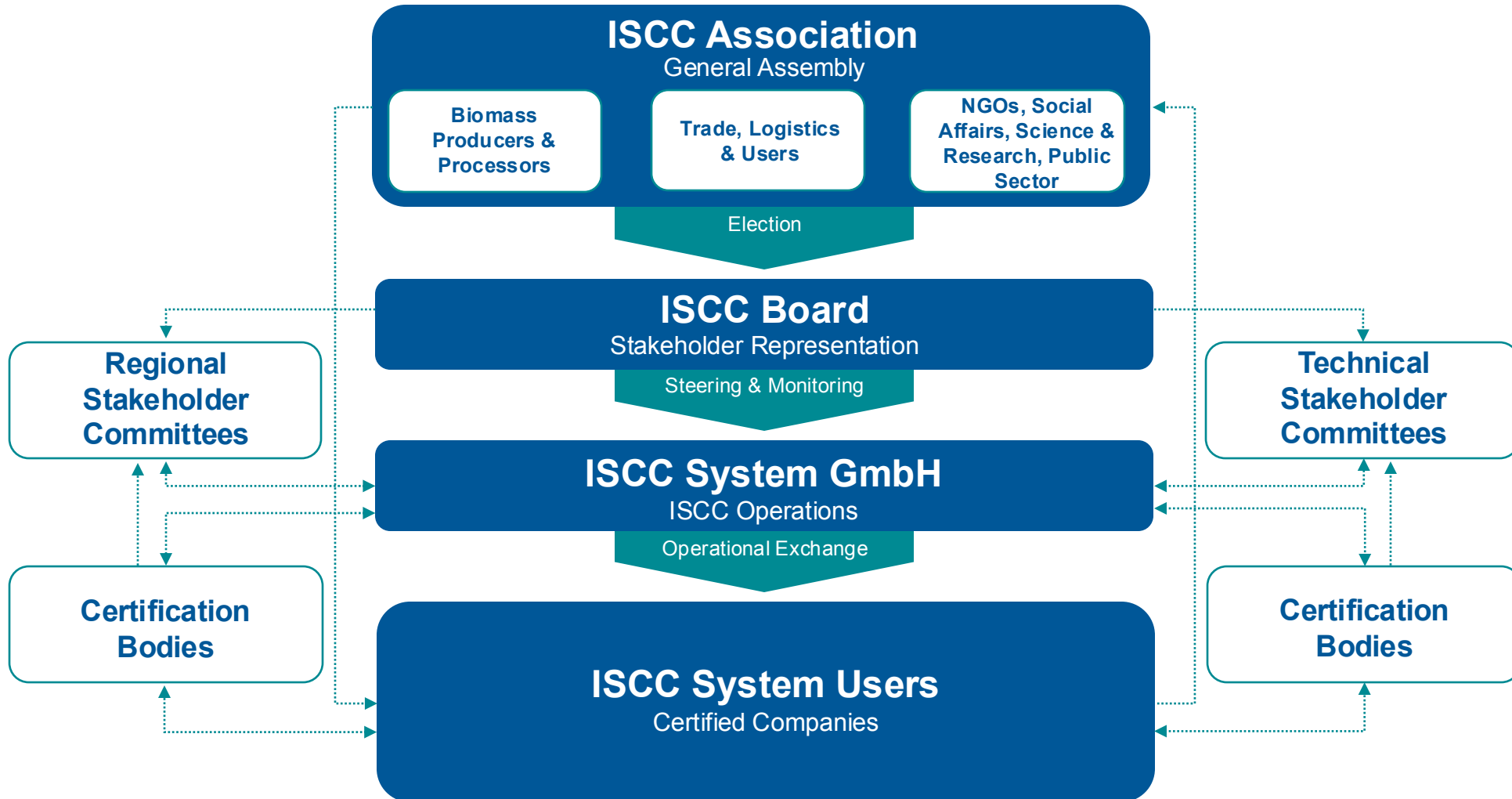
Cooperating Certification Bodies



*\*Data as of January 2025*

# The ISCC System

## Driven by Continuous Stakeholder Dialogue



# Our Commitment to Sustainability



The ISCC Association (ISCC e.V.) is the legally registered body responsible for the governance and strategic development of ISCC. We are committed to advancing sustainability certification through the promotion of sustainable, climate-friendly production in the areas of biomass and renewables, circular and bio-based materials.

**Thank you to all our esteemed Members for your dedication and engagement, and for furthering the ISCC System.**



**314  
Members**

**Business  
and  
Industry**



**Active multi-stakeholder dialogue  
to cultivate innovative sustainability  
solutions**



**Commitment to sustainable,  
traceable, deforestation-free &  
climate-friendly supply chains**



**Continuously improving standards  
to meet global sustainability  
requirements**

**NGOs  
and  
GOs**



**Further development of the circular  
economy and the bioeconomy**

**Research  
and  
Academia**

# The ISCC Association: 314 Engaged Members\*

## Multi-Stakeholder Governance of the ISCC System

New members are welcome



\*As of February 2025. Only Members who have given consent for showing their logos are included here. A complete list of Association Members can be found on the [Membership List](#) web page.

# The ISCC Association: 314 Engaged Members\*

## Multi-Stakeholder Governance of the ISCC System

New members are welcome



\*As of February 2025. Only Members who have given consent for showing their logos are included here. A complete list of Association Members can be found on the [Membership List](#) web page.



# Meet the ISCC Association Board

## Balanced Stakeholder Representation



**Rob Vierhout**  
**Chair of the Board**  
VP Public Affairs and  
Communication Alcogroup  
Brussels, Belgium



**Liisa Ranta**  
**Vice-Chair of the Board**  
Director, Sustainability and  
Market Development  
UPM Biofuels  
Helsinki, Finland



**Dr Steffen Mueller**  
**Vice-Chair of the Board**  
Energy Resources Center  
University of Illinois at Chicago  
Chicago, United States



**Daniel Barcarolo**  
Head of Regulatory Affairs  
Fonden Mærsk Mc-Kinney  
Møller Center for Zero Carbon  
Shipping, Copenhagen,  
Denmark



**Christian Dyczek**  
Sustainability Manager Muenzer  
Bioindustrie GmbH  
Vienna, Austria



**Jesus Lopez Lopez**  
Low Carbon Fuels Regulatory  
Manager, bp  
London, United Kingdom



**Erika Sanchez Garrido**  
Sustainability Commercial  
Director, Dow Europe  
Horgen, Switzerland



**Peter Schild**  
Managing Director Sustainability,  
Proman AG  
Wollerau, Switzerland

# Meet the ISCC Association Team



**Anastasia Koltsova**  
Associate Director



**Beatrice Eickhoff**  
System Manager



**Natalia Cena Wernicke**  
Working Student

- Contact us anytime at our **dedicated membership e-mail** address:  
**[membership@iscc-system.org](mailto:membership@iscc-system.org)**
- Members' inquiries and requests – via any communication channel – always receive **prioritized handling**

# Membership Benefits

- **Advancing and shaping the strategic development of the ISCC System**
- **Participation, voting rights, and decision-making power in the General Assembly**
- **Actively contributing to the ISCC Stakeholder Meetings and Working Groups**
- **Possibility to drive the Association and ISCC System forward as a Board Member**
- **Enhancing sustainability credentials through communication of the ISCC Association membership as a part of a strong sustainability community**

- **Prominent visibility on the ISCC website**
- **Enhanced networking opportunities**
- **Discount on the ISCC quantity-dependent fees and licensing fees (for ISCC System Users)**
- **“Priority Lane” registration for training courses, conferences and other ISCC events**
- **Prioritized request handling and customer support**
- **Access to the contents of the members’ section of the ISCC website**

Save the date:  
19.02.2025

# General Assembly

## The Superior Decision-Making Body of the ISCC Association



Annual event held in Q1



Live in Brussels, online participation possible



One vote per member → official representative



Two further persons per member may join



Networking opportunities at members' dinner

- **Elect the ISCC Board Members**
- **Discuss ISCC system developments with the Managing Directors**
- **Make strategic decisions**
- **Shape the future of sustainability certification**

- **Agendas, minutes and presentations from previous General Assemblies in the secure members' section of the website**
- **Contact the Membership Team for comments and questions**

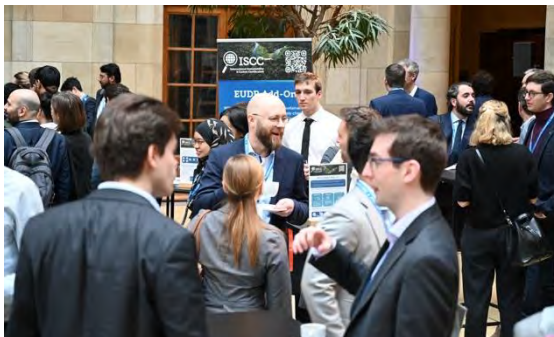
# ISCC Global Sustainability Conference

## Flagship Event of the ISCC Association

- Annual hybrid event with more than 900 participants from over 50 countries – onsite attendance limited to ISCC Members and select guests
- Experts from diverse markets and regions: regulators, leading industry representatives, brand owners, NGOs and research institutions
- Parallel streams for in-depth discussions and optimised networking opportunities: ISCC EU, ISCC PLUS and ISCC for SAF/AMF



YouTube



View the 2024 conference recap on [YouTube](#)

Presentations and interactive panel discussions on crucial topics, including:

- Sustainability certification developments and challenges
- Regulatory perspectives: European Green Deal and Fit for 55
- Emerging markets: RFNBOs and Sustainable Aviation and Alternative Marine Fuels
- Innovations within the circular economy and bioeconomy
- Licensing and claims for credible sustainability communication

Peruse the 2025 conference agenda and presentations on the [ISCC website](#)

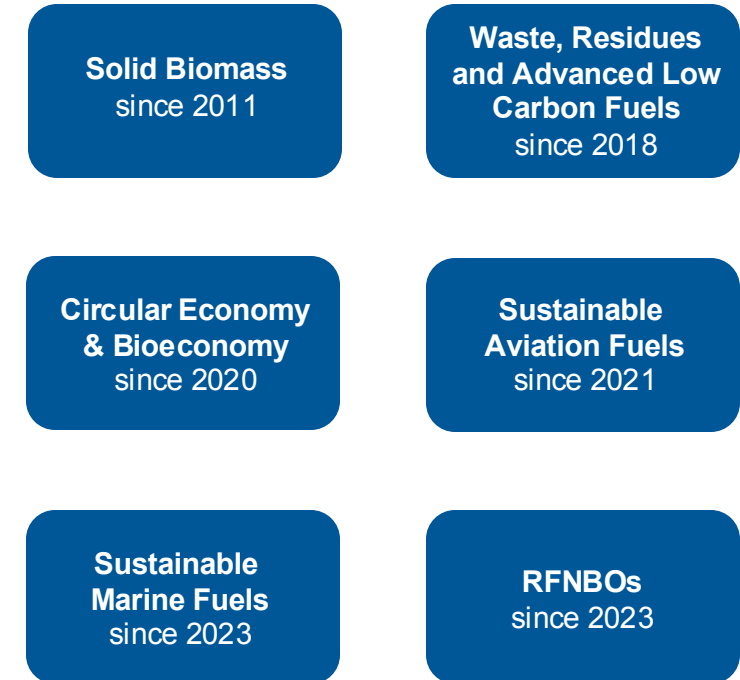
# Stakeholder Committees

## Continuous Development of the ISCC System through Active Participation

### Regional Stakeholder Committees



### Technical Stakeholder Committees



# Prominent Visibility and Enhanced Networking



## Visibility on the ISCC Website and at Events:

- Benefit from the prominent placing of your organisation's name and logo on our website and presented at Stakeholder events.



## ISCC Membership Announcements:

- New ISCC Association Memberships are announced in the ISCC Newsletter (15.5K subscribers) and on our LinkedIn page (18K followers).



## ISCC on Social Media:

- Join us on LinkedIn, or one of our other Social Media networks: tag @ISCC, find and connect with like-minded organisations.



# Discount on ISCC Fees for System Users and Brand Owners

## Quantity-Dependent Fees, Licensing Scheme and Credit Transfer System

Certificate fees		
Type of fee	Classification	Fee
<b>Certification fee<sup>1</sup></b>	Based on the total turnover of the registered legal entity: from < 3 Mill. € / year to > 500 Mill. € / year	200 - 2,000 €
<b>Quantity-dependent fee<sup>2</sup></b>	First gathering points, individually certified farms, collecting points, individually certified points of origin, central offices, traders, individually certified FPR	0,01 € / mt
	Processing units	0,10 € / mt
	Logistic centers, individually certified warehouses	n/a
	<b>Legal entities with ISCC Association membership</b>	<b>20% reduction of total quantity fee</b>
	Minimum quantity-dependent fee <sup>***</sup>	250 €

<sup>1</sup>Certificate fee due per issued certificate.

<sup>2</sup>Quantity-dependent fee based on amount of sustainable outgoing material.

Annual license fees		
Annual turnover (in Euro)	Fees per license agreement	Fees per license agreement for ISCC e.V. Members <sup>3</sup>
< 10 Million	1,500 € / year	<b>1,200 € / year</b>
< 50 Million	2,500 € / year	<b>2,000 € / year</b>
< 250 Million	4,000 € / year	<b>3,200 € / year</b>
< 500 Million	6,500 € / year	<b>5,200 € / year</b>
< 1 Billion	10,000 € / year	<b>8,000 € / year</b>
< 2 Billion	15,000 € / year	<b>12,000 € / year</b>
< 4 Billion	20,000 € / year	<b>16,000 € / year</b>
< 7 Billion	25,000 € / year	<b>20,000 € / year</b>
< 10 Billion	30,000 € / year	<b>24,000 € / year</b>
> 10 Billion	35,000 € / year	<b>28,000 € / year</b>

<sup>3</sup>Does not apply for already reduced prices.

ISCC Registry Account Fees <sup>4</sup>		
Type of fee	Fees	Fees for ISCC e.V. Members*
SAF Supplier	4,000 € / year	<b>3,200 € / year</b>
Aircraft Operator	2,000 € / year	<b>1,600 € / year</b>
Logistics Provider	2,000 € / year	<b>1,600 € / year</b>
Intermediary	2,000 € / year	<b>1,600 € / year</b>
Aviation end-customer	0 € / year	n/a
Credit transaction fee <sup>5</sup>		
Type of fee	Fees	Fees for ISCC e.V. Members*
Credit registration	2 € per mt of registered SAF	<b>1.60 € per mt of registered SAF</b>
Credit transfer	0 €	n/a
Credit retirements	0 €	n/a

<sup>4</sup>Charged per account in the ISCC registry (i.e. per ISCC System User).

<sup>5</sup>Invoiced 12 months after creation of the System User's registry account by ISCC and then annually from that date thereafter.

Discounts applicable to Members and their wholly-owned subsidiaries.



# “Priority Lane” Registration for ISCC Events and Trainings

We are pleased to offer ISCC Association Members **preferential admission** to ISCC events and trainings; upon opening registration, an **allocation of spaces is exclusively reserved for members**. Please be advised that spaces may be limited; members may always contact our Membership Team to request a spot - even after registration has closed - and we will try our best to find a solution. Please be sure to log in to the website before registering for an event or training so we can prioritize your registration.



# ISCC Statutes

## The Associations' Agreements and Regulations

We strongly advise all new ISCC Association Members to review the ISCC Statutes in order to understand the governance, rules and regulations:

<https://www.iscc-system.org/governance/iscc-association/>

- § 1 Name and Domicile of the Association, Business Year
- § 2 Purpose and tasks
- § 3 Membership
- § 4 Institutions
- § 5 General Assembly
- § 6 Board
- § 7 Management
- § 8 Technical Committees
- § 9 ISCC-Initiatives
- § 10 Working Language
- § 11 Complaints and appeals
- § 12 Dissolution of the Association
- § 13 Transitional provision



# ISCC's Success is Due to the Active Participation and Engagement of its Stakeholders

**Get involved**

- **Join a Stakeholder Committee**
  - **Actively contribute with your invaluable knowledge and experience**
  - **Address specific needs with a hands-on approach**
- **Submit a Proposal**
  - **The Membership Team is your first point of contact to address topics and discuss the potential inclusion of content in Association events and meetings**
- **Wondering how else you can contribute?**
  - **Contact the Membership Team with your thoughts and ideas!**



# Thank you

**for being a valued member of the ISCC Association,  
we appreciate your engagement!**

ISCC System GmbH

Hohenzollernring 72, 50672 Cologne, Germany

[www.iscc-system.org](http://www.iscc-system.org)

